

**SUBJECT : SCIENCE (MULTIPLE CHOICE QUESTION)**

Time : 30 minutes

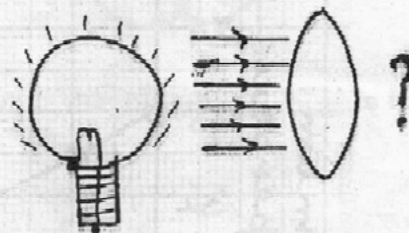
MM : 15

**General Instructions :**

- i) Attempt all the questions.
- ii) There are 15 multiple choice questions in total. Only one of the options in every question is correct. Put a (✓) against the correct option.
- iii) Each question carries 1 mark.
- iv) Do not use white fluid on these sheets.
- v) Use only pen to mark the answers.

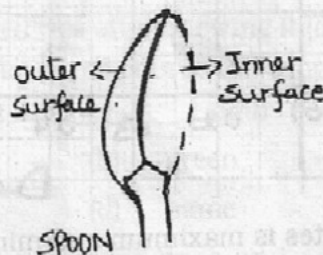
Q1. When a lighted bulb is placed in front of convex lens, the beam of light passing through it

- (a) will not emerge
- (b) remains parallel
- (c) converges at a point
- (d) will diverge from each other



Q2. Inner surface of spoon acts as

- (a) convex mirror
- (b) concave mirror
- (c) convex lens
- (d) concave lens



Q3. When white light falls on the surface of CD (Compact Disc), it appears colourful due to

- |                         |                         |
|-------------------------|-------------------------|
| (a) reflection of light | (b) dispersion of light |
| (c) scattering of light | (d) refraction of light |

Q4. While performing an experiment with lens, Ankita obtained erect image at all distances. The lens is \_\_\_\_\_ and the image formed is \_\_\_\_\_

- |                       |                    |
|-----------------------|--------------------|
| (a) concave , virtual | (b) concave , real |
| (c) convex , virtual  | (d) convex , real  |

Q5. Ruby observed that the time taken by simple pendulum for completing 25 oscillations was 75 seconds. Find the time period of the pendulum.

- |           |           |
|-----------|-----------|
| (a) 1 sec | (b) 2 sec |
| (c) 3 sec | (d) 4 sec |

Q6. These two chemicals are used to disinfect the clean water in a sewage treatment plant before releasing it into the distribution system :

- A. iodine  
C. oxygen  
(a) A and B  
(c) B and C

- B. ozone  
D. chlorine  
(b) B and D  
(d) C and D

Q7. The below mentioned graph is showing the variation of maximum temperature at Delhi during the week of 01 to 07 November 2013.



On which dates is maximum and minimum temperature observed?

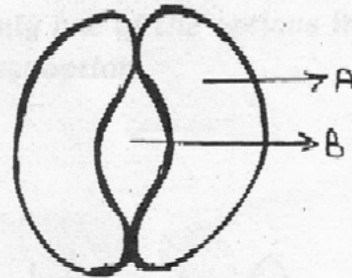
- (a) 05 and 07 November  
(b) 01 and 06 November  
(c) 03 and 07 November  
(d) 04 and 05 November
- Q8. On burning of natural silk fabric a peculiar smell is produced which resembles with the burning of
- (a) paper  
(b) plastic  
(c) hair  
(d) rotten egg
- Q9. A gas 'X' is used widely in hospitals. It is also given out during the process of photosynthesis. Identify 'X'.
- (a) nitrogen  
(b) oxygen  
(c) hydrogen  
(d) carbon dioxide
- Q10. Carbon-dioxide gas is produced during the process of respiration. When it is passed through a colourless solution 'M', the solution turns milky. Identify the solution 'M'.
- (a) calcium carbonate  
(b) calcium oxide  
(c) calcium hydroxide  
(d) calcium sulphate

Q11. In human beings, the 16 teeth of each jaw consist of :

- (a) 2 incisors, 4 canines, 4 premolars and 6 molars
- (b) 4 incisors, 2 canines, 6 premolars and 4 molars
- (c) 4 incisors, 2 canines, 4 premolars and 6 molars
- (d) 2 incisors, 4 canines, 6 premolars and 4 molars

Q12. Observe the given diagram and identify the function of part B during the daytime.

- (a) taking in oxygen
- (b) releasing carbon dioxide
- (c) exchange of gases
- (d) taking in water in the form of water vapour



Q13. During exhalation, ribs move down and inwards, while diaphragm \_\_\_\_\_ to its former position.

- |                      |                     |
|----------------------|---------------------|
| (a) moves down       | (b) moves up        |
| (c) moves right side | (d) moves left side |

Q14. Rohan has added one teaspoonful of boiled rice after chewing it for 3 to 5 minutes in a test-tube containing 3-4 ml of water. Later on he poured 2-3 drops of iodine solution to it. Then he observed that the solution has \_\_\_\_\_ colour.

- |                |           |
|----------------|-----------|
| (a) blue black | (b) green |
| (c) pink       | (d) same  |

Q15. Silk production involves cultivation of mulberry trees and rearing silk worms. Cultivation of mulberry trees on large scale is known as \_\_\_\_\_.

- |                  |                  |
|------------------|------------------|
| (a) sericulture  | (b) floriculture |
| (c) silniculture | (d) moriculture  |